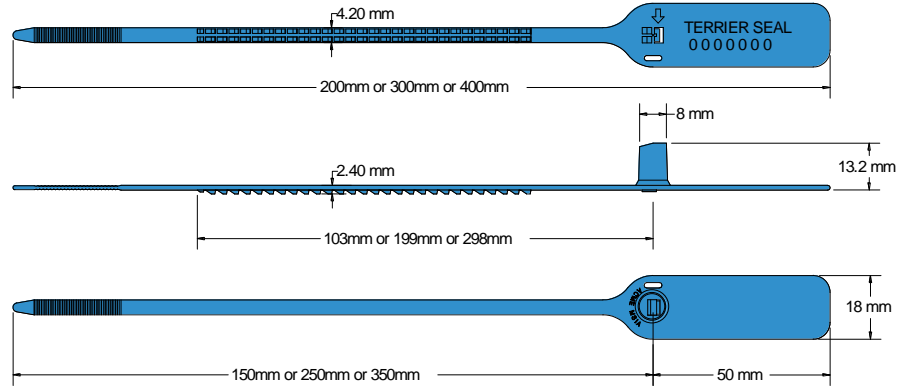




TERRIER SEAL Data Sheet

Acme Reg No: 1910017



The Acme **Terrier Seal** is a pull tight seal manufactured from Polypropylene material. The strap lock configuration is similar to that of the Combilock seal but is smaller in width and therefore suitable for applications where there is a small sealing aperture and strength is a requirement. This seal is suitable for most applications.

Technical Data

Recommended Applications

Airlines, Refineries, Warehouses, Cash bags, Postbags, Mailrooms, Bar boxes, Fire doors, Lockers.

Material

Polypropylene with Biodegradable additives

Available Operating Length

- (L1) 15cm (overall 20cm)
- (L2) 25cm (overall 30cm)
- (L3) 35cm (overall 40cm)

Strap Width

4.20mm

Average Application Breaking Strength

20kg

Marking

- Laser or Foil marking
- Consecutively numbered as standard
- Optional Customer name/logo
- Optional Laser Barcoding

Colours

- Foil marked: red, blue, green, yellow, orange, black, white.
- Laser or Foil marked: pastel shades of pink, blue, green, yellow, peach, also black and white.
- Other colours may be available on request.

Packaging

- Standard Packaging : 10 per mat and 1,000 seals/carton
- Carton Dimensions : (L1) - 36cm x 21cm x 21cm
- : (L2) - 40cm x 25cm x 21cm
- : (L3) - 50cm x 23cm x 20cm
- Carton (gr) weight : (L1) - 2.6kg/carton
- : (L2) - 3.1kg/carton
- : (L3) - 3.7kg/carton

