

Emergency Eye Wash Wall Mounted Hand Operated

EEE120

Enware's emergency eye/face wash units help to flush contaminants and irritants from eyes and facial area.

Designed and manufactured in Australia. Stainless steel construction provides superior durability and reliability.

FEATURES

- Independently tested to comply with ANSI Z 358.1 and AS/NZS 4775
- Stainless steel bowl, stay-open ball valve and hand actuator
- Push activated eye wash with soft aerated flow and integral auto-open dust covers
- Integral flow volume control
- Eye wash features "Vertech™ Technology" where dedicated eyewash streams deliver optimum coverage
- Zero velocity apex point provides more comfort and control for effective cleansing of eyes
- High visibility yellow powder coated push handle



ADDITIONAL OPTIONS

- Audio/Visual alarms for alerts
- Flow, pressure and proximity switches to activate alarms and lights
- Thermal relief valve removes built-up hot water
- Anti-freeze valve for cold weather climates to help prevent water freezing
- NPT flange connectors
- Custom manufacturing & design
- Signage compliant to AS1319

Product Codes

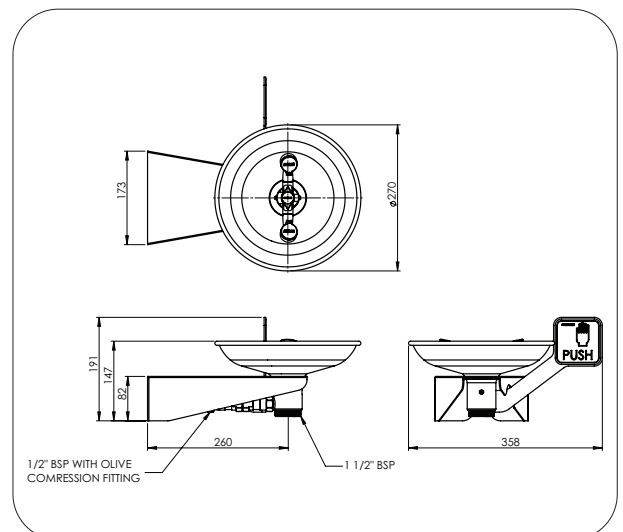
EEE120 Wall Mounted Eye Wash Hand Operated
Stainless Steel



Technical Information

Inlet Connection	15 mm (1/2" BSP) with compression nut
Water Supply Line Size	Must be hydraulically sized to meet requirements.
Minimum Requirements to achieve ANSI Z358.1-2009 and AS/NZS 4775 2007 compliance	210 kPa Caution should be taken when pressure exceeds 550 kPa (80 psi) Minimum Flow: 1.5 lpm (0.4 US gpm)
Enware Performance	At Working Pressure: 210 kPa (30 psi)
	Eyewash flow: 17lpm (4.5 US gpm)
Waste water outlet	G 1-1/2" BSP

Installation of emergency showers, eye and eye/face wash equipment shall be in accordance with AS/NZS4775-2007 or ANSI Standard Z358.1 - whichever is applicable to the installation. Enware Australia advises:
1. Due to ongoing Research and Development, specifications may change without notice.
2. Component specifications may change on some export models.

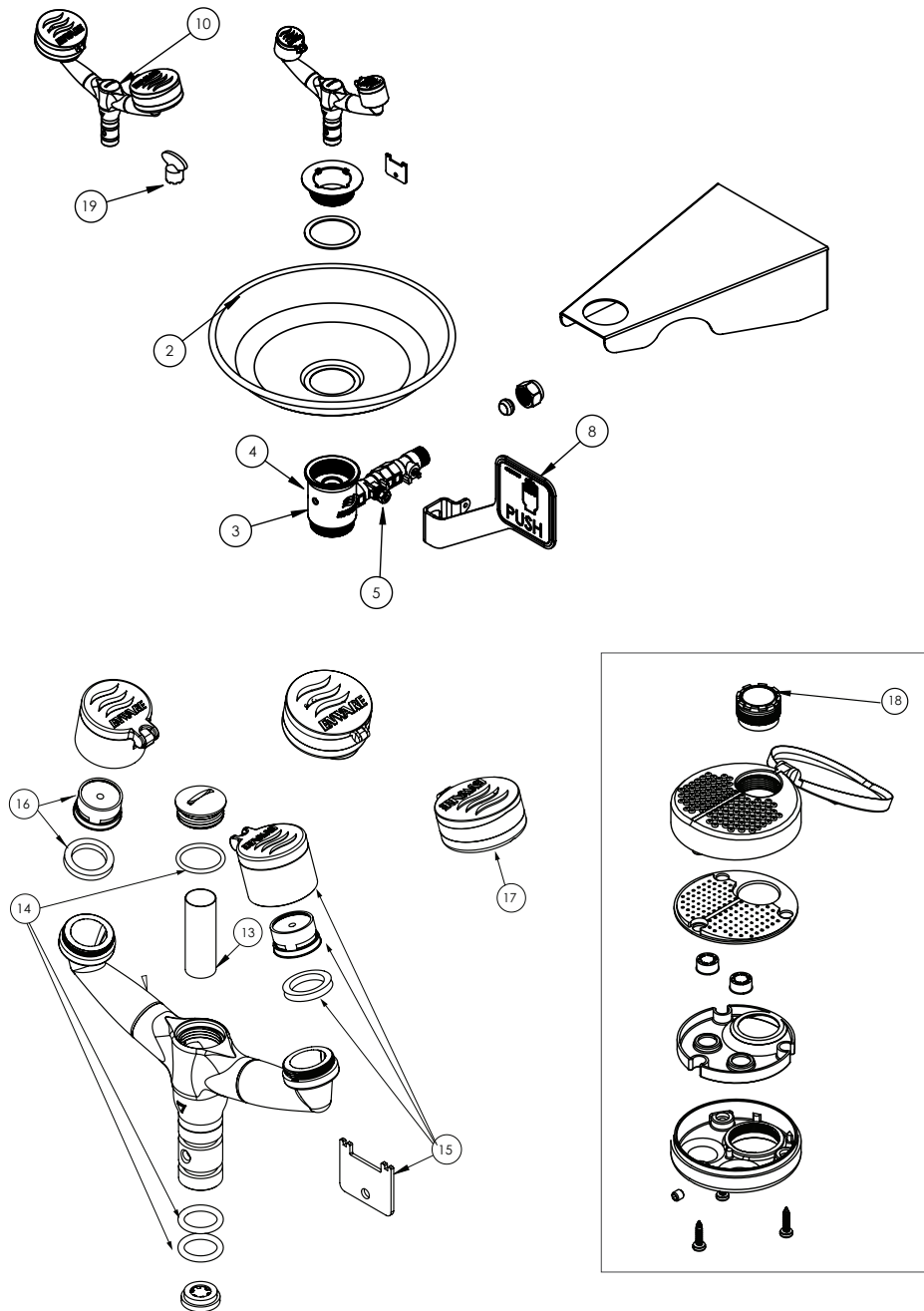


Version: Aug 21

Call 1300 369 273
www.enware.com.au

Enware Australia Pty Limited
9 Endeavour Rd Caringbah NSW 2229 Australia
Ph: 02 8536 4000 info@enware.com.au





Item	Description	
2	Bowl	ESPE008
3	Eye Wash Waste With Inlet Control Valve	ESPE818
4	Grub Screw M6 X 12Mm Waste Tee	ESPE814
5	Ball Valve And Flow Control Assembly FF half inch SS one piece	ESP005
8	Push Handle	ESPE010
10	Eye/Face Wash Frame only	ESPE815
	Inspection Tag	ESS521

Item	Description	
13	Mesh Filter 1/2" (40 Mesh)	ESPE811
14	O-rings for Eye & Eye/Face Wash Tee Piece (2x Spigot O-rings, 1x Strainer Cap O-ring)	ESPE812
15	Eye Wash Dustcover With Aerator (1 Pair) and key	ESPE016
16	Aerator and Washer to Suit Eye Wash (1 each)	ESPE015
17	Eye/Face Wash Outlet (each)	ESPE012
18	Aerator to Suit Eye/Face Wash	ESPE013
19	Aerator Key to Suit Eye/Face Wash Only	ESPE014

Version: Aug 21

Call 1300 369 273
www.enware.com.au

Enware Australia Pty Limited
 9 Endeavour Rd Caringbah NSW 2229 Australia
 Ph: 02 8536 4000 info@enware.com.au

